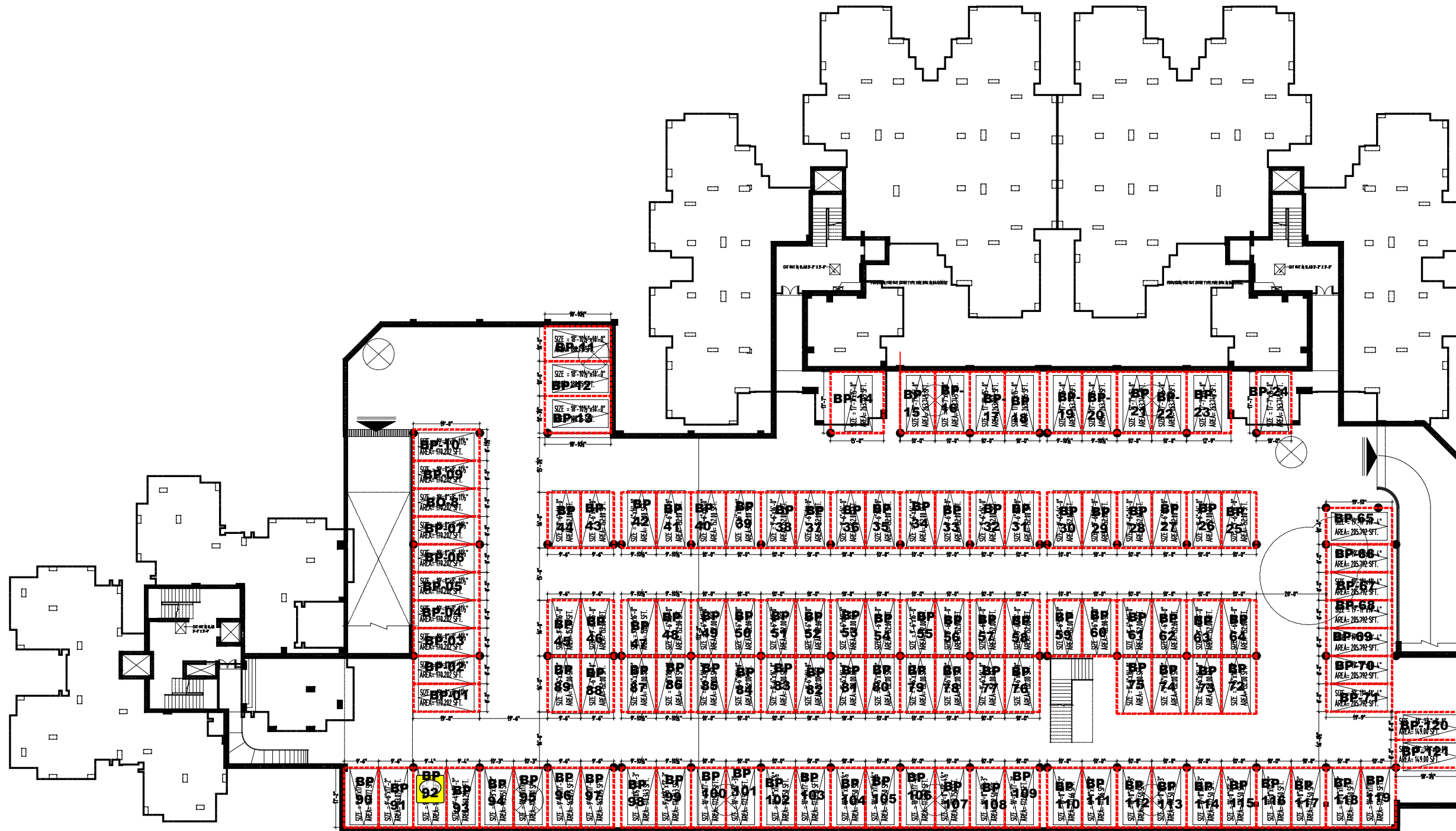


PROPOSED HOUSING SCHEME FOR AIR FORCE & NAVAL HOUSING BOARD NEAR MAHAVIR CHOWK AT JALANDHAR

TOTAL NO. OF CAR PARKING 121 NOS.



SALEABLE PARKING AREA DETAIL			
Sr.	ITEM	STILTED PARKING	BASEMENT PARKING
01.	A BLOCK (BETA) OFFICERS FLATS	14 NOS.	39 NOS.
02.	A BLOCK (ALPHA) OFFICERS FLATS	13 NOS.	40 NOS.
03.	B BLOCK AIRMENS FLATS	06 NOS.	42 NOS.
04.	TOTAL	33 NOS.	121 NOS.
			154 NOS.

s.no.	date	description	initial

REVISIONS

The data provided on this drawing is copyright material and the property of the architect. Any use, reproduction, or modification of this drawing without the prior approval of the architect is strictly prohibited.

DRAWINGS APPROVED

AUTHORISED SIGNATORY ...
 ARCHITECTS AND CONSULTANTS.
AVINASH KHOSIA AND ASSO.
 # 568 - A, POLICE HOUSE LINK ROAD,
 NEAR FOUNTAIN CHOWK, CIVIL LINES,
 LUDHIANA - 8. (PB.)
 PH. 2448401 , 2448293 | M. 98140-21780
 FAX. 0161-2448293 . | M. 98140-09514
 EMAIL. kanavkhosia@consultant.com

AVINASH KHOSIA KANAV KHOSIA
 b.arch., t.i.i.a., m.c.a., f.iv. b.arch., masters in U.D. (Oct.) U.K.,
 P.L.L.B., M.C.A., B.I.V.

project title :
 ARCHITECTURE DRAWING

drawing title :
 PARKING DETAIL
 BASEMENT FLOOR PLAN

scale :	date :	drg.no.
1" = 16'-0"	01/06/2011	HP/18/AFNHB/10
		PR / AR / 04