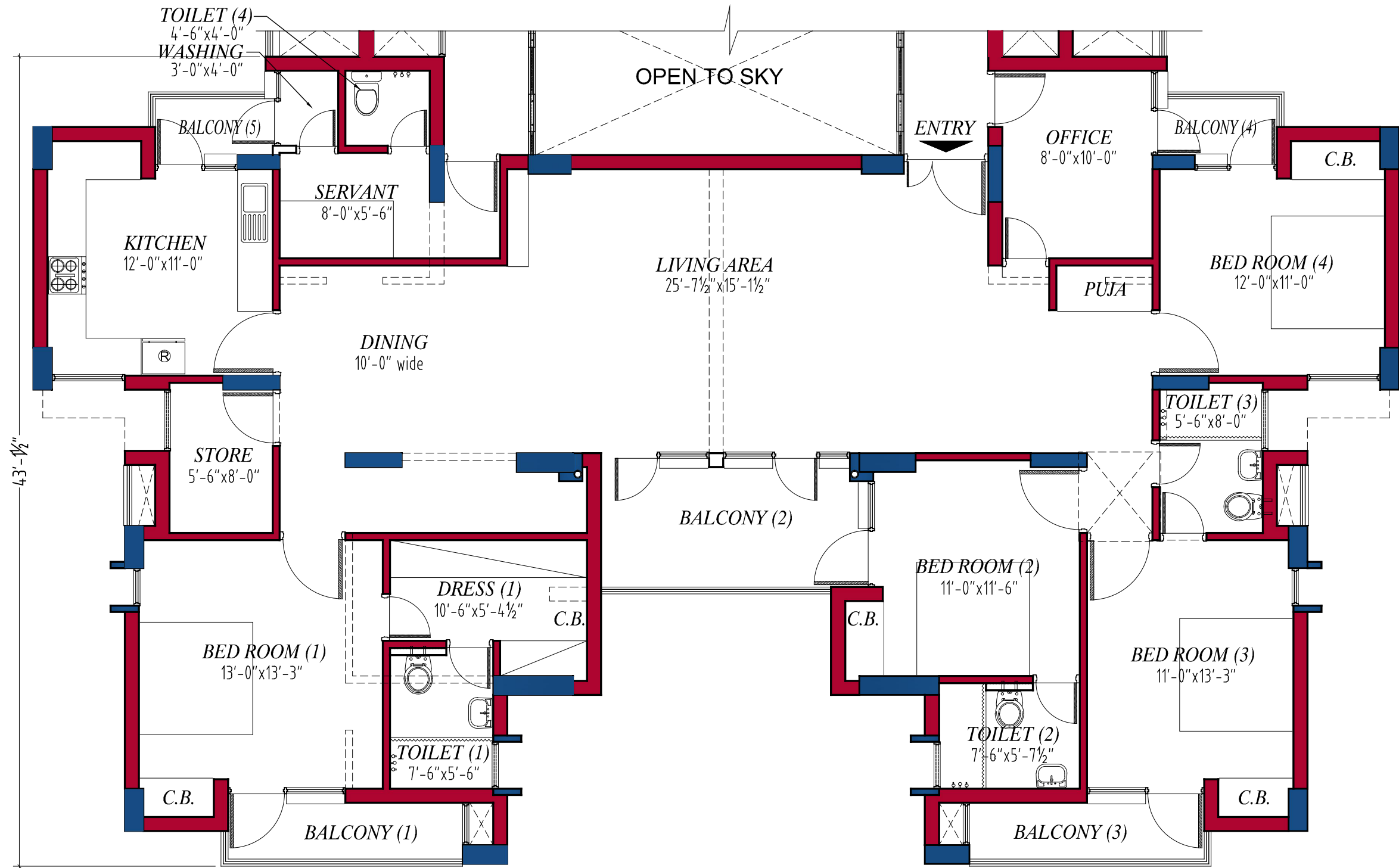


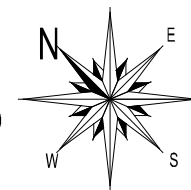
PENT HOUSE - (TYPE - A)

(OPTION-2)



A.F.N.H.B.

**PROPOSED HOUSING SCHEME FOR
AIR FORCE & NAVAL HOUSING BOARD
AT JALANDHAR...**



**ARCHITECTS AND CONSULTANTS
AVINASH KHOSLA AND ASSO.**

#568-A, S.S.P. House Link Road,
Near Fountain Chowk, Civil Lines, Ludhiana. (Pb.)
PH. 2448401, 2405301 FAX. 0161-2448293
EMAIL. kanavkhosla@consultant.com

AVINASH KHOSLA
b.arch., m.c.a., f.i.a., f.i.v.

KANAV KHOSLA
b.arch., masters in U.D.(Oxf.) U.K.,
a.i.a., m.c.a., a.i.v.